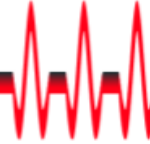


Bullema, J.E. (Jan Eite)

Sent: donderdag 29 mei 2008 15:19
To: Bullema, J.E. (Jan Eite)
Subject: Newsletter Phoenix Software May 2008



Phoenix Software for micro- and nano technologies

**NEWSLETTER MAY 2008**

- ▶ **NEW CleWin 4.1 : multiple rulers in one screen**
- ▶ **Integrating FlowDesigner into Business Model**
- ▶ **Phoenix Software joins European Research Projects**
- ▶ **Visit us at ECIO and OWTNM 2008**

Geachte Jan Eite Bullema,

Hierbij ontvang u onze nieuwsbrief van mei 2008, met daarin de laatste ontwikkelingen van onze softwareproducten en -diensten.

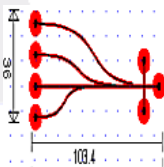
In de afgelopen periode hebben we een aantal nieuwe uitdagende onderzoeksprojecten opgestart met leidende commerciële en academische partners in het veld van de micro- en nanotechnologie. Verder is ons ontwikkelteam versterkt met een nieuwe software engineer.

Beschikbaar via onze website zijn een nieuwe versie van CleWin, een online demonstratie van de mogelijkheden van MaskSliceLink en een application note voor FlowDesigner.

Als laatste willen we onze klanten bedanken voor alle feed-back aan onze helpdesk. Dit helpt ons met de verdere verbetering van onze producten om de efficiency van uw design flow te verhogen.

Met vriendelijke groeten,
 Het Phoenix team

▲ **NEW CleWin 4.1 : multiple rulers in one screen**



The new menu '**Insert measurement**' in CleWin 4.1.2 allows the usage of several rulers in one screen at the same time. This menu makes the applied rulers permanent, so one can add as many rulers as required in one screen. Furthermore, this menu allows one to select and to edit the rulers like any other object.

Selecting a ruler also activates the '**View cross section**' command which exports the selected **Mask-Slices** to FlowDesigner, the visualization tool to create accurate cross section views of design.

» [Online Demo : CleWin4_MaskSliceLink.avi \(3 MB\)](#)

▲ **Integrating FlowDesigner into Business Model**

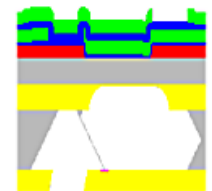
- Do you use **process flow** drawings for **articles**, **archives** or **teaching** materials?
- **How often** do you make drawings for process flows?
- What **tools** do you use to create these drawings?

FlowDesigner is an **inexpensive** and versatile software tool to depict the visualization of your process flows.

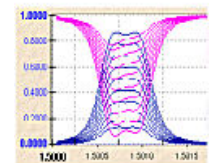
When the **Design** and the **Process Engineers** are fully involved, the software can be used to check for **process interactions** : a simple way to check if all process parameters are compatible.

Product Portfolio

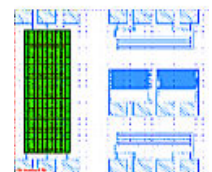
Living Database
 » [read more](#)



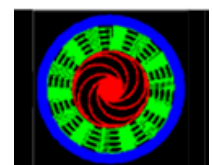
FlowDesigner
 » [read more](#)



ASPIC
 » [read more](#)



CleWin 4 (PRO)
 » [read more](#)



MaskEngineer
 » [read more](#)



» [Download Application Note \(170 KB\)](#)

FlowDesigner saves time and **avoids trivial but costly** errors in the mask and process flow design. The depicted process steps can be exported as an **animation**, an **HTML report**, or as a **successive image per step**.

For more inquiries, please [contact us](#) to obtain a one month free evaluation.

▲ **Phoenix Software joins European Research Projects**

Phoenix Software has joined **three consortia** in new **FP7 projects** to further increase the European competence in the field of **photonics** and **micro manufacturing**. These new FP7 projects show our strong commitment to develop world-class software tools.

Phoenix's focus to build long-term collaborations with industry and academic partners is widely recognized. The opportunity to work directly with the leading companies and institutes in Europe on the next generation of software tools will strengthen the road-map of product development and commercial position.

▲ **Visit us at ECIO and OWTNM 2008**

Meet us at [European Conference on Integrated Optics](#) June 11-13, 2008 in Eindhoven, The Netherlands. Phoenix Software will present the suitability of our world-class design, simulation and manufacturing tools to the world of micro and nanotechnologies.

Phoenix Software also sponsors the International Workshop on [Optical Waveguide Theory and Numerical Modelling](#) June 13-14, 2008 in Eindhoven, The Netherlands. Meet our numerical and design experts to exchange new ideas in an open and relaxed atmosphere. » [read more](#)

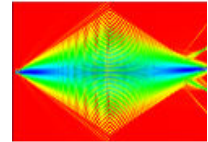
About Phoenix Software

[MANAGE YOUR CLEANROOM](#) | [CREATE YOUR DESIGN](#)

Phoenix is a supplier of professional software tools for the micro- and nano technology industry. As the market has matured rapidly, there is an increased demand for professional working methods and tools. Phoenix, with a highly skilled and experienced team in the various fields of micro- and nano technology, supports customers worldwide with its professional software. Typical products include software for mask lay-out and process flow simulation (MaskEngineer, CleWin and FlowDesigner), software for integrated optics simulations (OptoDesigner, FieldDesigner and ASPIC) and the leading manufacturing execution system dedicated to the industry: the Living Database.

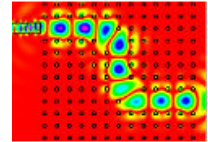
<http://www.phoenixbv.com>

Unsubscribe [here](#) if you don't want to receive this newsletter anymore.



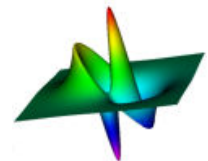
**OptoDesigner
BPM**

» [read more](#)



**OptoDesigner
FDTD**

» [read more](#)



FieldDesigner

» [read more](#)



IntelliSuite

» [read more](#)